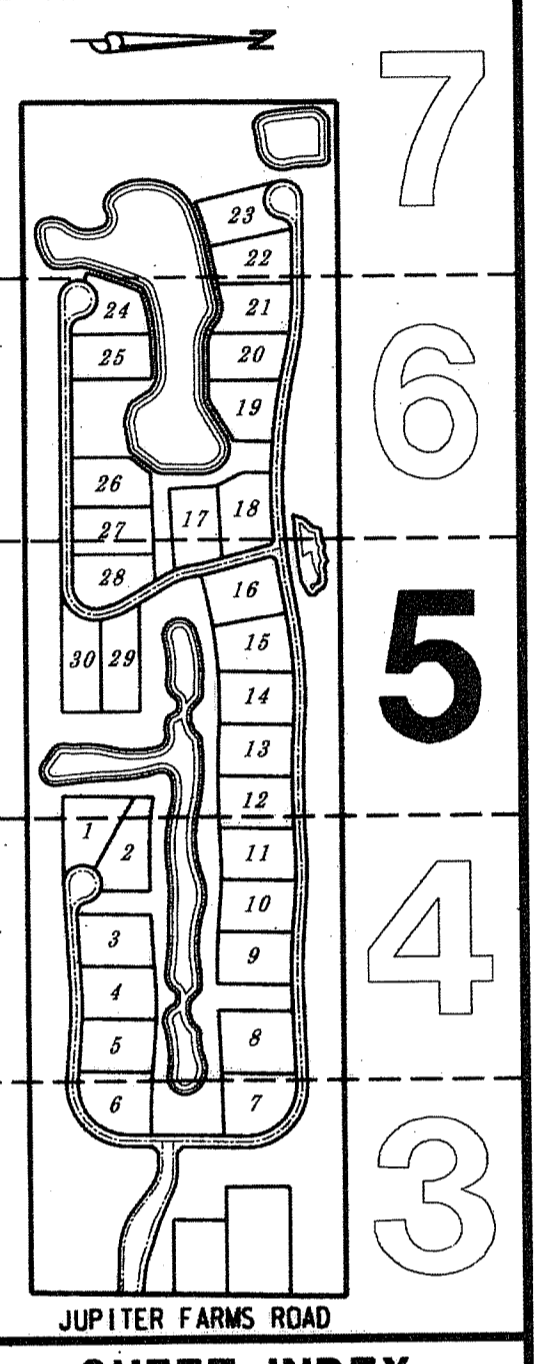
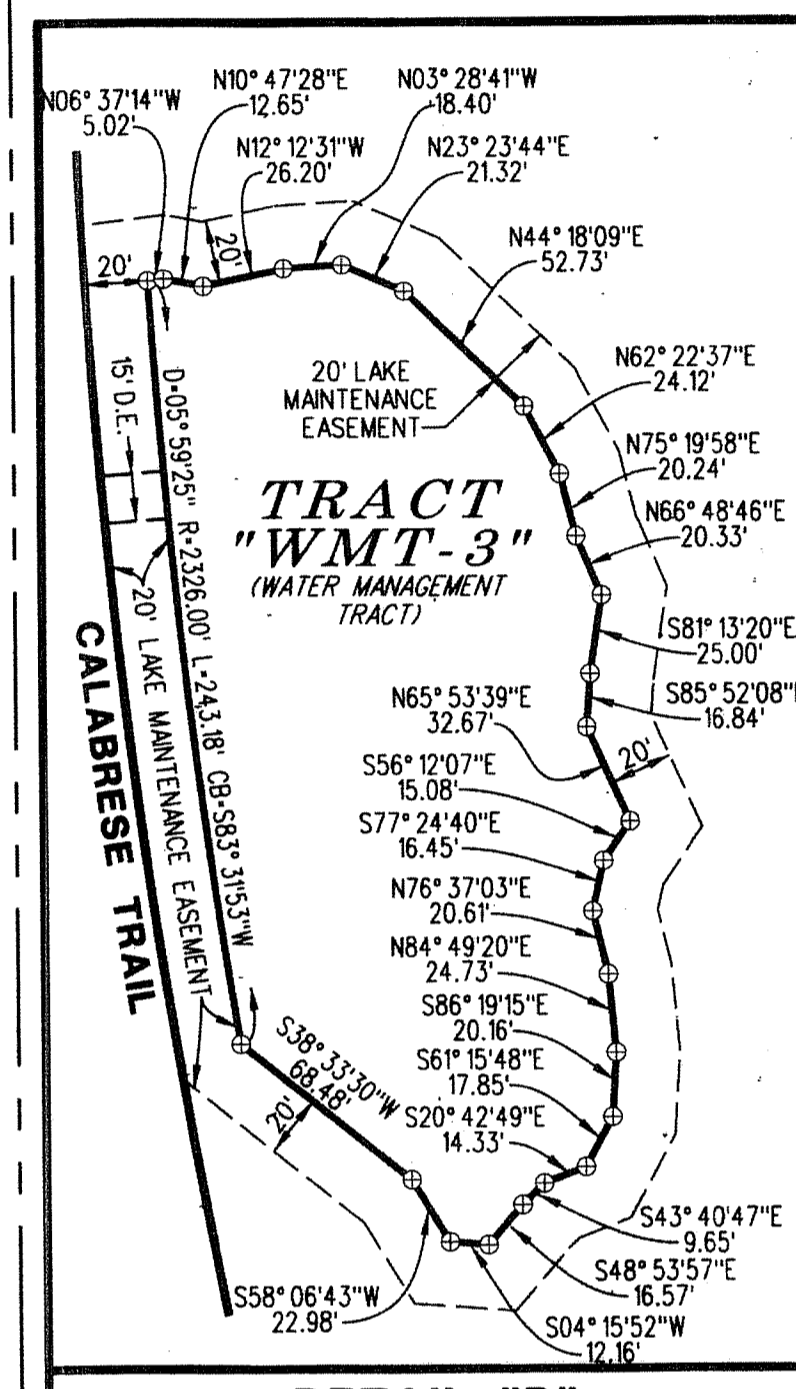
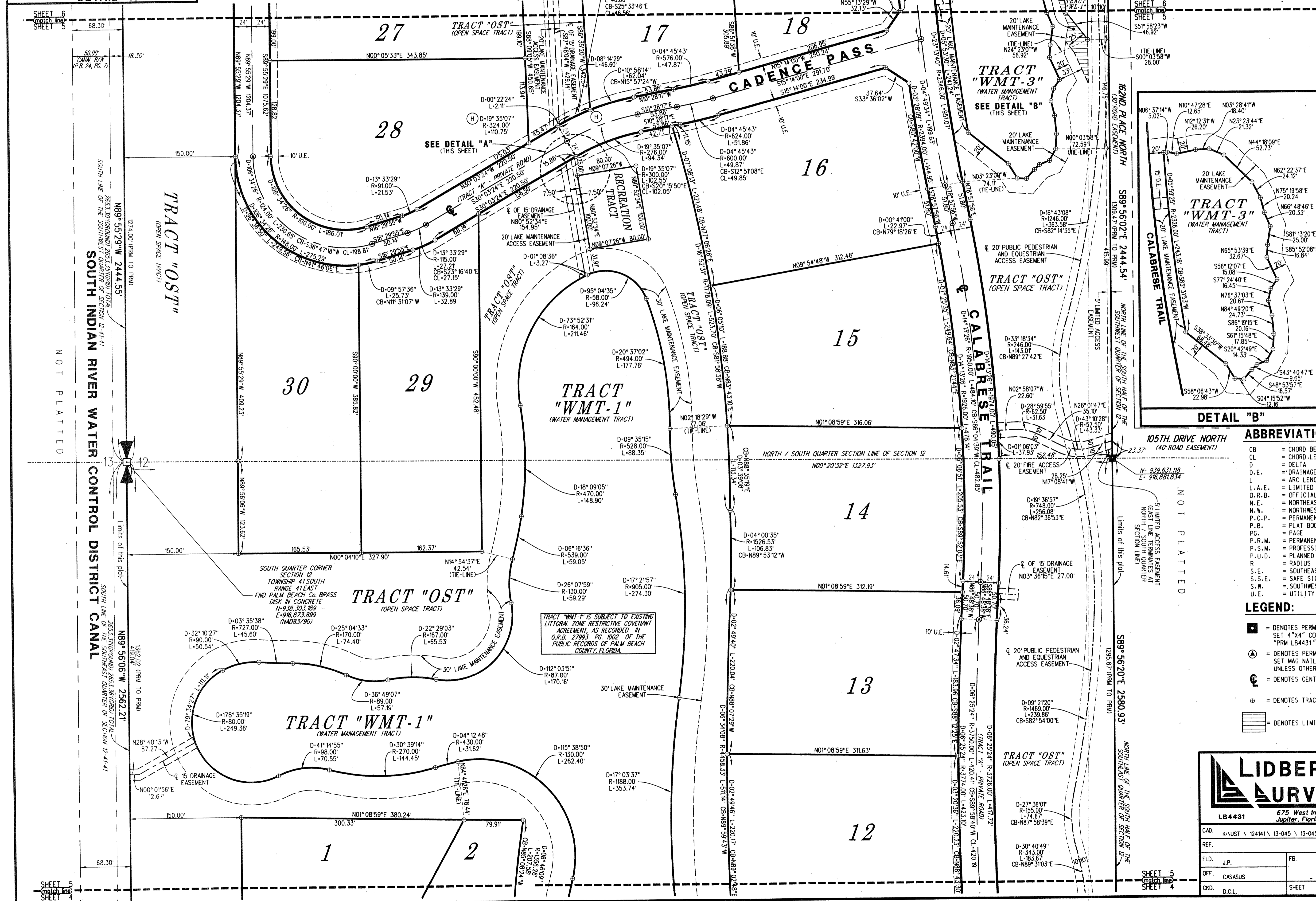
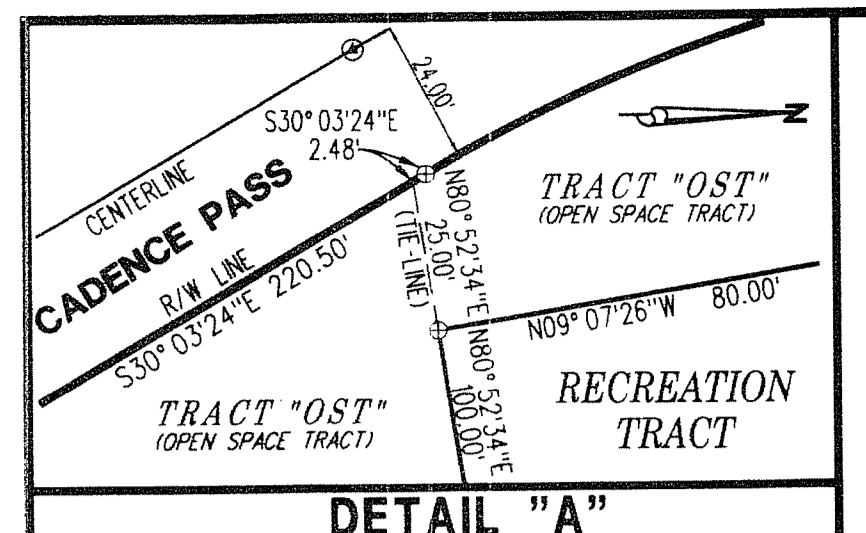
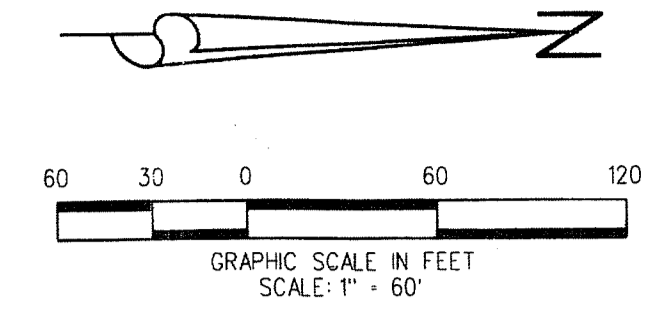


REYNOLDS RANCH, A P.U.D.

BEING A PORTION OF SECTION 12, TOWNSHIP 41 SOUTH, RANGE 41 EAST, PALM BEACH COUNTY, FLORIDA

JUNE 2016 SHEET 5 OF 7



- ABBREVIATIONS:**
- CB = CHORD BEARING
 - CL = CHORD LENGTH
 - D = DELTA
 - D.E. = DRAINAGE EASEMENT
 - L = ARC LENGTH
 - L.A.E. = LIMITED ACCESS EASEMENT
 - O.R.B. = OFFICIAL RECORD BOOK
 - N.E. = NORTHEAST
 - N.W. = NORTHWEST
 - P.C.P. = PERMANENT CONTROL POINT
 - P.B. = PLAT BOOK
 - PG. = PAGE
 - P.R.M. = PERMANENT REFERENCE MONUMENT
 - P.S.M. = PROFESSIONAL SURVEYOR AND MAPPER
 - P.U.D. = PLANNED UNIT DEVELOPMENT
 - R = RADIUS
 - S.E. = SOUTHEAST
 - S.S.E. = SAFE SIGHT EASEMENT
 - S.W. = SOUTHWEST
 - U.E. = UTILITY EASEMENT
- LEGEND:**
- = DENOTES PERMANENT REFERENCE MONUMENT (P.R.M.) SET 4"x4" CONCRETE MONUMENT WITH DISK STAMPED "PRM LB4431" UNLESS OTHERWISE NOTED
 - ⊙ = DENOTES PERMANENT CONTROL POINT (P.C.P.) SET MAG NAIL & DISK STAMPED "PCP LB4431" UNLESS OTHERWISE NOTED
 - ⊕ = DENOTES CENTERLINE OF RIGHT OF WAY
 - ⊕ = DENOTES TRACT OR LOT CORNER
 - ▨ = DENOTES LIMITS OF WETLAND BUFFER

LIDBERG LAND SURVEYING, INC.
 LB4431 675 West Indiantown Road, Suite 200, Jupiter, Florida 33458 TEL: 561-746-8454

CAD. K:\JUST \124111\13-045 \13-045A-306 \13-045A-306.DGN			
REF.			
FLO. J.P.	FB.	PG.	JOB 13-045A-306
OFF. CASASUS			DATE JUNE 2016
CKD. D.C.L.	SHEET 5 OF 7	DWG. D13-045P	

NOT PLATTED

NOT PLATTED